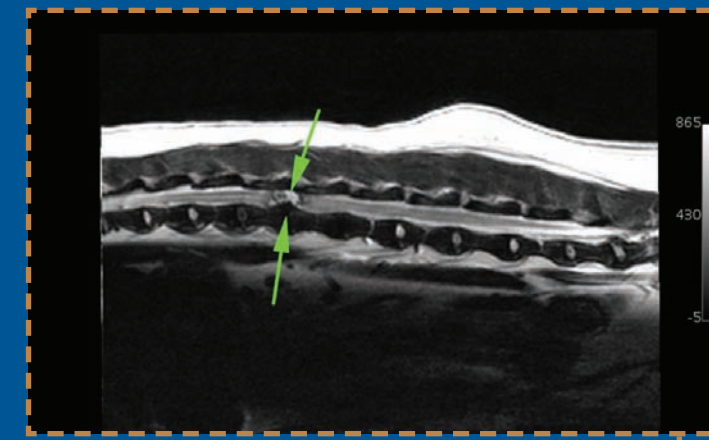


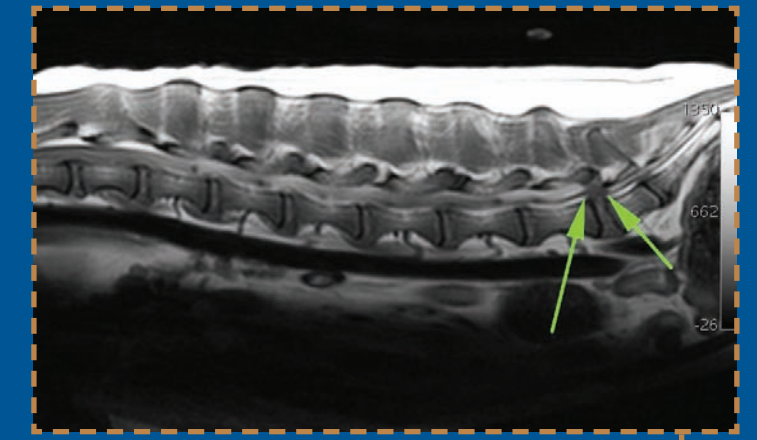
6 year old Dachshund with sudden onset of neck pain

MRI Result: Moderate spinal cord compression at level C2/C3 due to intervertebral disc disease



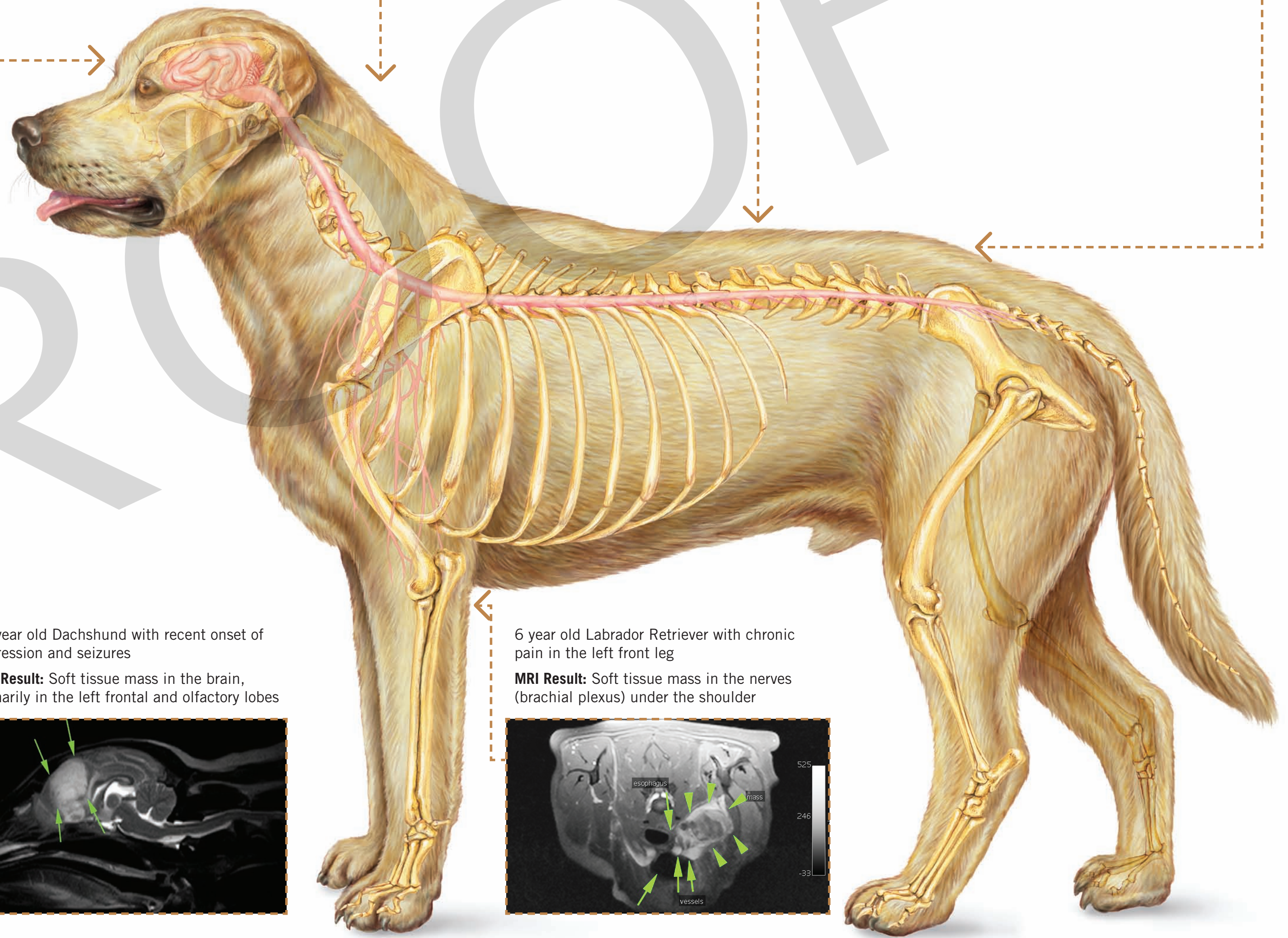
7 year old Bichon Frise with sudden onset of paralysis

MRI Result: Severe spinal cord compression at level L1/L2 due to intervertebral disc disease



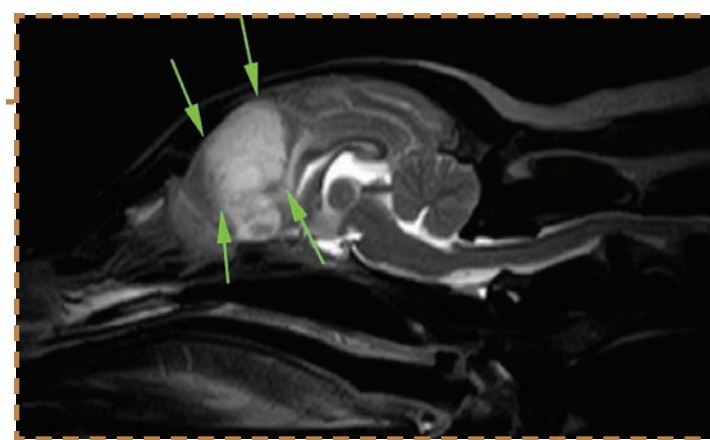
3 year old Golden Doodle with chronic pain in the lower back

MRI Result: Moderate compression of nerves at the lumbosacral junction due to intervertebral disc disease



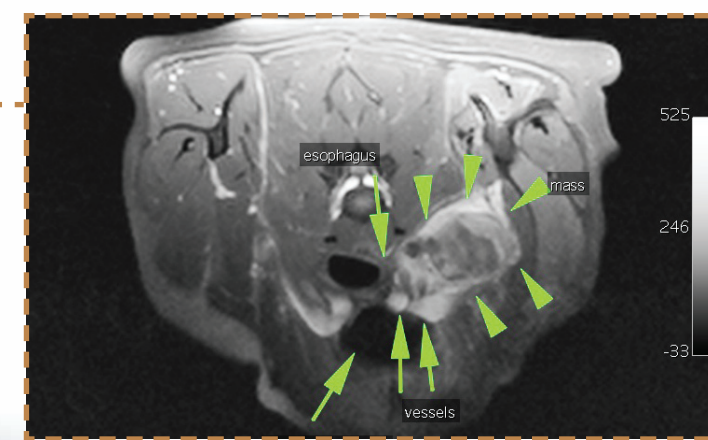
13 year old Dachshund with recent onset of depression and seizures

MRI Result: Soft tissue mass in the brain, primarily in the left frontal and olfactory lobes



6 year old Labrador Retriever with chronic pain in the left front leg

MRI Result: Soft tissue mass in the nerves (brachial plexus) under the shoulder



Why Choose Magnetic Resonance Imaging (M.R.I.) For *YOUR* Pet?

M.R.I. at Vet Imaging Partners is a safe, non-invasive diagnostic tool which can be used to identify the causes and conditions associated with:

- neurological symptoms such as weakness, incoordination, neck pain, seizures and head tilts
- orthopedic injuries, including joint diseases, both acute and chronic
- oncological cases

M.R.I. allows your veterinarian the ability to make comprehensive, well-informed, clinical decisions about your companion animal's illness, treatment options and prognosis.

M.R.I. gives your veterinarian the pieces to the puzzle to help your family member feel better!

WHY M.R.I.?